

# Two truck catastrophes at Beach Road and Cliff Grove corner in the early 1990s prompted the present **SAFETY SECTION**:



**Beaumaris Conservation Society Inc.**

Association Number A00348878

PO Box 7016

Beaumaris Victoria 3193

T 9589 5194 M 04291 76725

[info@bcs.asn.au](mailto:info@bcs.asn.au)

[www.bcs.asn.au](http://www.bcs.asn.au)

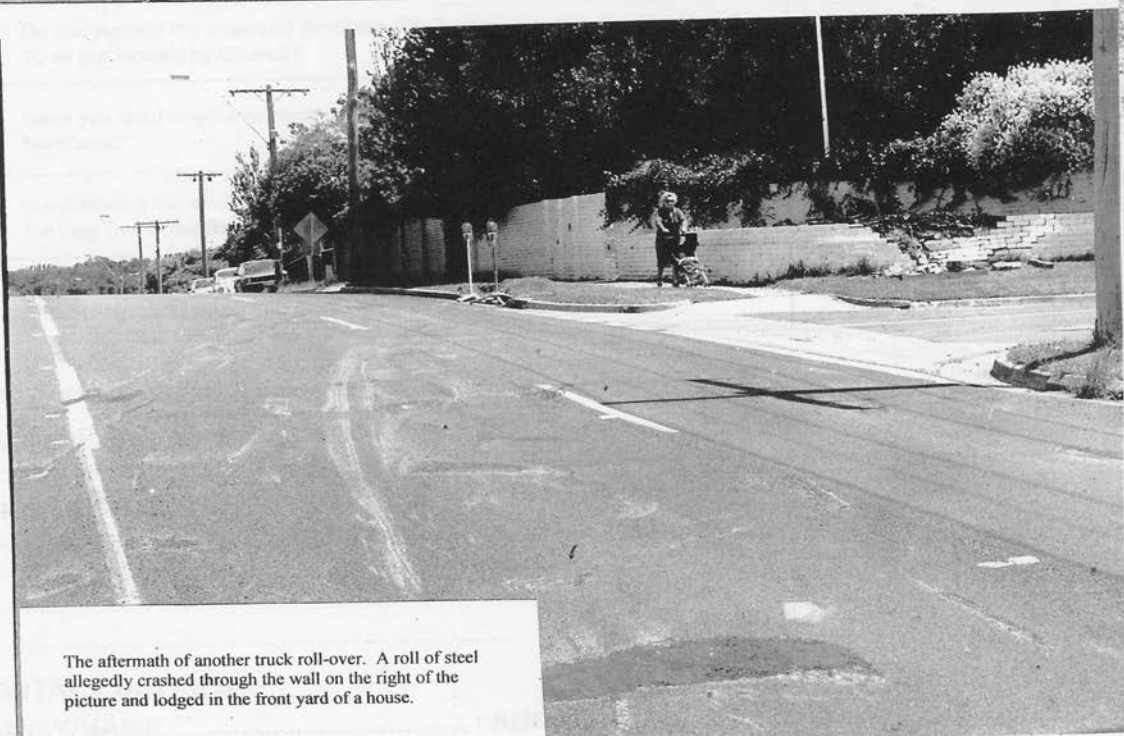
**Photo 1 – A truck rollover onto the nature strip**

**Photo 2 – Aftermath of a 17 tonne steel roll (*mass of a Melbourne tram*) breaking free of its chain and rolling to break a brick wall**

**- Note the quickly patched successive bounce gouges in the bitumen road surface, like one of the Dam Busters' bouncing bombs!**



A truck roll-over in Beach Road north of Charman Road. there were several fatalities and serious injuries from head on collisions prior to the road being choked to 2 lanes.



The aftermath of another truck roll-over. A roll of steel allegedly crashed through the wall on the right of the picture and lodged in the front yard of a house.